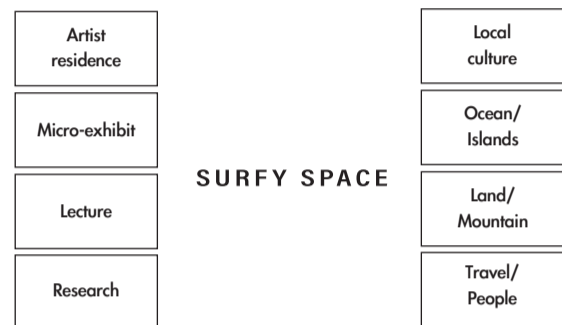
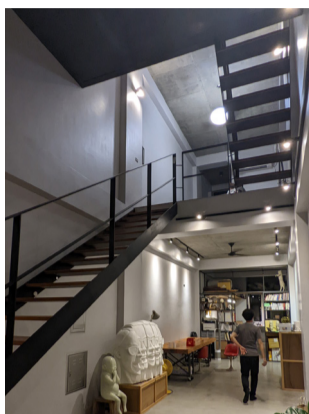
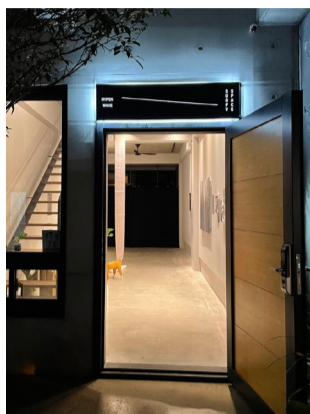
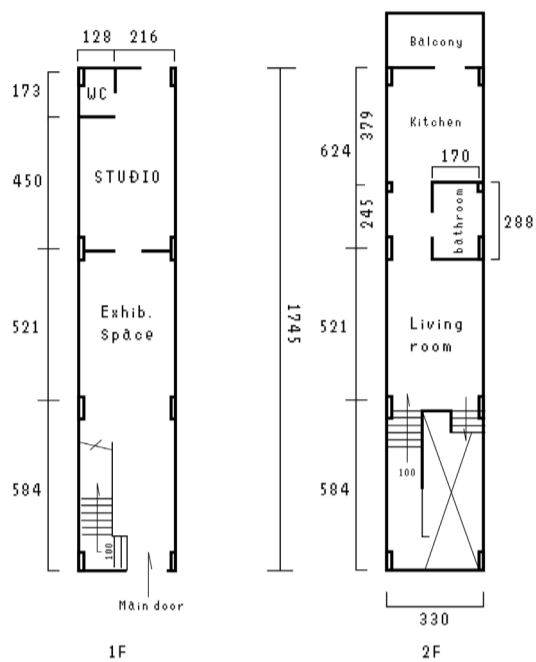


「浪花藝術空間」成立於2022年，由超級浪藝術團體組織營運，空間位於宜蘭羅東市區，緊鄰羅東夜市與火車站，區域內商業繁盛，人文薈萃。本空間以當代藝術的視野，引介國內外藝術家、策展人、文化工作者等專業人士進駐，辦理駐村、座談、展演、在地研究和創作，成為在地文化與國際連結的平台。

Established in 2022 and is operated by the Hyper Wave Art Group. Surfy Space is located in the downtown area of Luodong, Yilan, close to Luodong Night Market and the train station. The area is bustling with commerce and rich in culture. With a contemporary art perspective, the space brings in domestic and international artists, curators, cultural workers, and other professionals to participate in residencies, seminars, exhibitions, local research, and creative activities. It aims to become a platform that connects local culture with the international community.



藝術團體「超級浪」立案於2022年台北市萬華區，團員組成大多源自於2020年文化部「MIT」計畫獲選藝術家。名稱源自於當代藝術變異與不確定性，以藝術浪人自居，將當代藝術創作的特質，置放於環境中進行藝術對話。

Hyper Wave Art Group was established in 2022, after most of its members were brought together by being selected for the Ministry of Culture's "Made In Taiwan" program in 2020. The name is derived from the variability and uncertainty of contemporary art. The artists position themselves as art wanderers, aiming to engage in artistic dialogues by integrating the characteristics of contemporary art creation within the environment.

羅東林業文化園區

羅東的文化和經濟發展，拜太平山林業所賜。西元1921（日大正十年），羅東鎮取代宜蘭市成為轉運和儲藏木材的出張所，在羅東經濟變遷的歷程上，佔據極重要的份量。羅東林場在歷史上是相當重要的林業生產空間，也承載著羅東人對林業深厚的情感與記憶，如今以「林業文化」重新找到它的歷史位置，也賦予逐漸沒落的林業更有活力的未來。

Luodong Forestry Culture Park

The cultural and economic development of Luodong owes much to the forestry industry of Taiping Mountain. In 1921, Luodong Town replaced Yilan City as a branch office for the transportation and storage of timber. Throughout the course of Luodong's economic transformation, this played a pivotal role. The Luodong Forestry Station has historically been a significant space for forestry production and carries deep emotional connections and memories for the people of Luodong. Today, it has reclaimed its historical significance as a forestry culture, infusing the declining forestry industry with a more vibrant future.

羅東文化工場

羅東文化工場以「工場」為名，是延伸早期羅東鋸木廠的概念，期待各個族群皆可在多元的實驗場域中，獲得藝術及美感的體驗，因此，它不僅是一個藝文展演的設施，更是一個結合休閒及運動的優質活場域，兼具文化、展演及生活美學三個面向的機能，由空間意象勾勒羅東林業歷史脈絡，成就當代藝術、文化創意與人文歷史的對話，成為今日羅東最重要的城市與文化地標，重新塑造城市氛圍。

Luodong Cultural Working House

Luodong Cultural Working House extends the concept of the early Luodong sawmills. It aims to provide various groups with experiences of art and aesthetics in a diverse and experimental space. Therefore, it serves not only as a facility for artistic and cultural exhibitions but also as a high-quality active space that combines leisure and sports. It fulfills three dimensions: culture, exhibition, and life aesthetics. The space imagery outlines the historical context of Luodong's forestry, fostering a dialogue between contemporary art, cultural creativity, and human history. It has become a crucial urban and cultural landmark in present-day Luodong, reshaping the city's atmosphere.

交通資訊

國道客運：羅東轉運站下車，步行至羅東火車站後站，穿越至前站出口公正路，直行至天津路口右轉直行約1,000公尺可達浪花空間（步行約20分鐘）。

火車：羅東火車站前站出口，直行至天津路口右轉直行約1,000公尺可達浪花空間（步行約20分鐘）。

How to get there?

By intercity buses:
Alight at Luodong Transfer Bus Station.
Proceed to the rear of Luodong Railway Station.
Cross over to the front exit of the station on Gongyi Road.
Walk straight to the Tianjin intersection.
Turn right at the intersection and continue straight for about 1,000 meters to arrive at Surfy Space.
The walk takes around 20 minutes.





SURFY SPACE

**Follow
This
Wave**

